
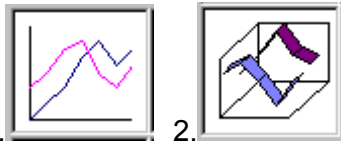


- Select all data samples.
- Click the toolbar's **Chart Wizard** icon . The **Chart Wizard...Chart Type** dialog displays. On the **Standard Types** tab, select **Line** from the **Chart Type** menu.



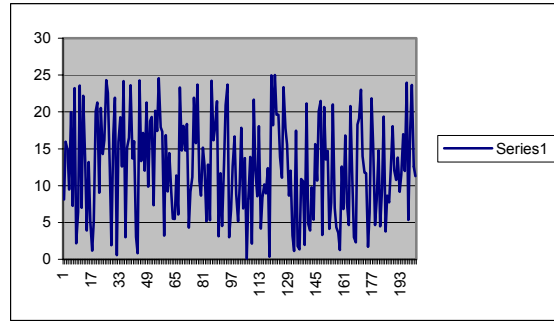
- From the **Chart Sub-Type** menu, select the **Line** sub-chart icon if plotting the FFT, and **3-D Line** sub-chart icon if plotting the Waveform.



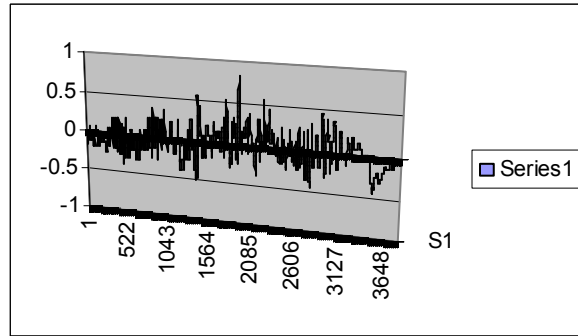
1. **Line** (1.) and **3-D Line** (2.) sub-chart icons.

- Click **Next**. The **Chart Wizard...Chart Source Data** dialog displays.
- Click **Next** again. The **Chart Wizard...Chart Options** dialog displays. Click **Finish**.
- The plot displays on the spreadsheet.

*Note - For instructions on merging data from multiple Excel files, refer to Microsoft Excel Help.*



FFT Plot.



Waveform Plot.

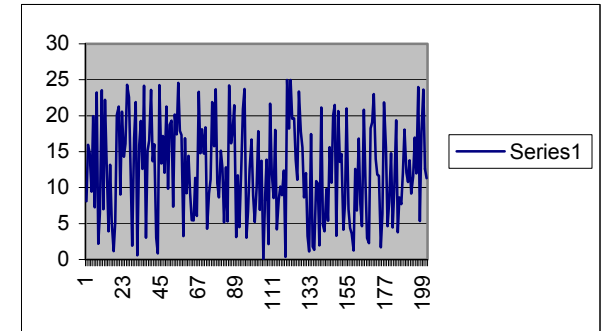
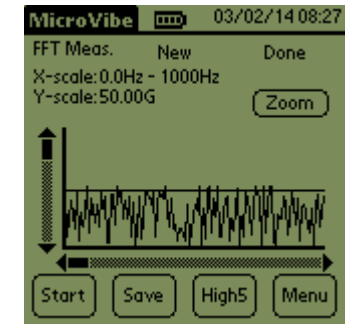
## SKF Reliability Systems

4141 Ruffin Road  
 San Diego, California 92123 USA  
 Telephone (858) 496-3400  
 FAX (858) 496-3531  
 For product support, visit our Web site  
[www.skfcm.com](http://www.skfcm.com)

# CMAC3820 Data Extract Software

## Quick Reference Guide

### How to Transfer Data from the MicroVibe to Microsoft Excel



P/N 31914500-EN Revision A

Copyright © 2003 by SKF Reliability Systems, Inc.  
 All Rights Reserved  
 4141 Ruffin Road, San Diego, CA 92123-1841 USA  
 Telephone: (858)496-3400, FAX: (858) 496-3531  
 Customer Service:1-800-523-7514, Email: [tsc-usa@skf.com](mailto:tsc-usa@skf.com)

## Overview

The CMAC3820 Data Extract Software makes it possible for data transferred from the MicroVibe unit onto a computer to be converted into Microsoft Excel format. Once in Excel, this data can be plotted using Excel's Chart Wizard.

Follow the procedures below to transfer, convert, and display collected data.

## Transferring Data

- Save the collected data in the MicroVibe unit.
- Connect the MicroVibe to the computer and synchronize with Hot Sync. The data will be transferred to **C:\Program Files\Hanspring\Device User Name\Backup\**.

*Note - Reference the MicroVibe User Manual (P/N 31871100) for detailed steps on saving collected data, connecting to the computer, and using Hot Sync.*

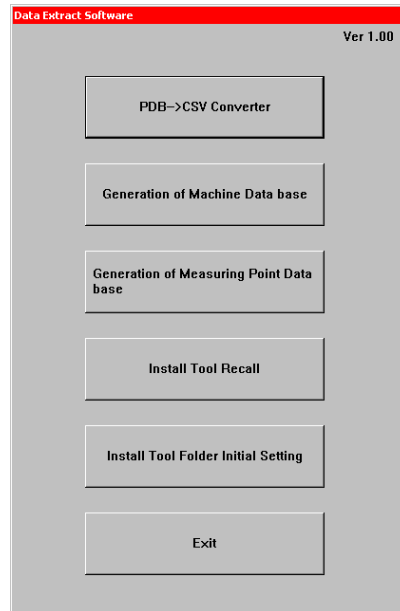
## Converting Data

- Launch the CMAC3820 Data Extract Software by double clicking the **CMAC3820** icon.



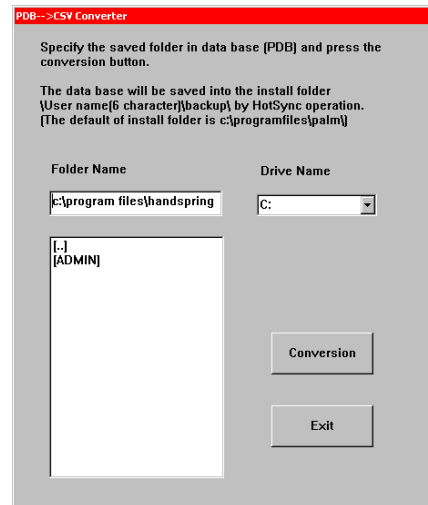
2

- From the **Data Extract Software** main menu, select **PDB → CSV Converter**.



3

- On the **PDB → CSV Converter** dialog, from the **Drive Name** drop-down list, select the drive where the **Backup** folder is located (usually **C:**).

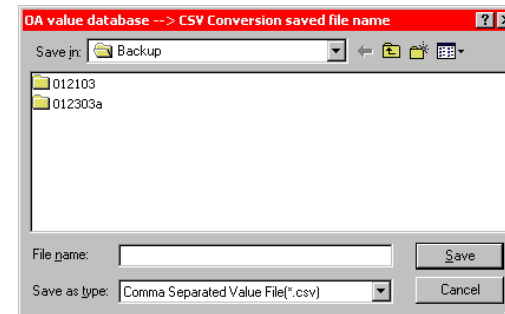


- Use **[..]** to browse to locate the data files in the **Backup** folder.

*Note - Double-click on a folder name to open it.*

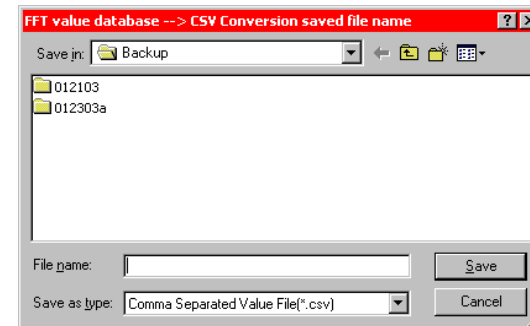
## Overall Vibration

- Once the data files are in view, click the **Conversion** button. The **OA Value Database → CSV Conversion** dialog appears.



## FFT Spectrum

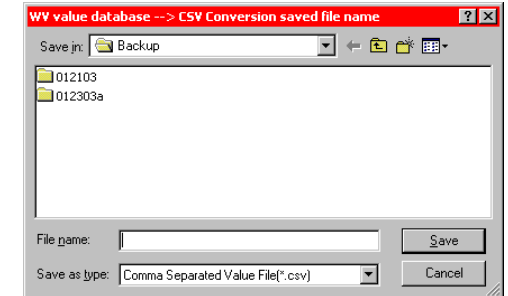
- Create a file name and click **Save**. Upon saving, the **FFT Value Database → CSV Conversion** dialog appears.



4

## Time-Waveform

- Create a file name and click **Save**. Upon saving, the **WV Value Database → CSV Conversion** dialog appears.



- Create a file name and click **Save**. The **PDB → CSV Converter** dialog displays with the message, **"Transformation to csv file completed."**
- Repeat conversion steps as necessary.
- **Exit** the **Data Extract Software**.

*Note - Repeat this process anytime new data is collected. To avoid overwriting files, be sure to create unique file names each time.*

## Displaying Converted Files

- Locate the converted files.

*Note - The converted files should be located in **C:\Program Files\Hanspring\Device User Name\Backup\** as Excel files.*

- Launch the converted file into Microsoft Excel by double-clicking its file name.

5